

ROSA-Bar ™ - ROSA® Pearl Barcode Reader



- ▶ Secure sample identity
- ▶ Barcode label for sample, Charm strip, receiving log
- ▶ Barcode auto prints from ROSA Pearl Reader
- ▶ Minimize keypad entries
- ▶ Integrate with LIMS and / or milk receiving software

SPECIFICATIONS:

- ▶ The barcode reader also has the ability to identify a specific test strip using a unique 9 digit barcode which allows for external programming to prevent duplicate strips from being read.
- ▶ The barcode reader has also the ability to identify a milk sample vial using a unique barcode, which includes one alpha character, and 6 numerics. This option provides seamless interfacing with LIMS.
- ▶ The barcode scanner interfaces with the communication port of the ROSA PEARL Reader.
- ▶ The PEARL ROSA Reader and the barcode scanner are in idle state until the user is ready to analyze the strip.
- ▶ When the enter key on the ROSA PEARL Reader is pressed, the reader will prompt the user with actions to be performed in order to run the test.
- ▶ The ROSA PEARL Reader stores that barcode in memory with other run test parameters and test result for future reference.
- ▶ The ROSA PEARL Reader will also print the barcode on the test report for traceability.
- ▶ Results can be interfaced with dairy LIMS to control milk valves and pumps.

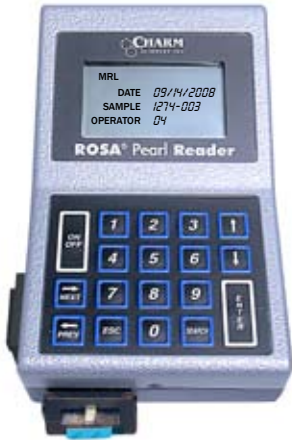


Charm Sciences, Inc.

659 Andover Street, Lawrence, MA 01843-1032, USA
 Tel: +1.978.687.9200 | Fax: +1.978.687.9216 | Email: info@charm.com | www.charm.com

© Copyright 2008 Charm Sciences, Inc.

Send Results Direct to a ROSA Printer or to Computer (CSV file)



```

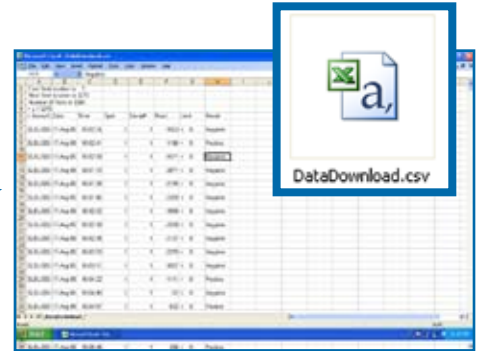
050CT2007 Oper# Samp# Read
08:40:03 1 001 -1189
SLEL6000-0000 Neg

050CT2007 Oper# Samp# Read
08:52:15 15 002 1597
SLEL6000-0000 Pos

050CT2007 Oper# Samp# Read
09:40:09 91 003 1635
SLEL6000-0000 Pos

050CT2007 Oper# Samp# Read
10:26:19 12 004 -1124
SLEL6000-0000 Neg

050CT2007 Oper# Samp# Read
10:40:12 41 005 -1146
SLEL6000-0000 Neg
    
```

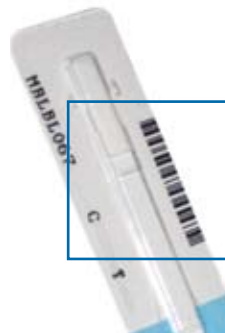


Specifications	[Order Code: rosareader]
Unit Dimensions	7 x 4.5 x 3 inches (17.8 x 11.4 x 7.6 cm, W x H x D)
Screen Dimensions	2.6 x 1.5 inches (6.6 x 3.8 cm, W x H)
Weight	< 1.4 lb (0.64 kg)
Power Source	Internal rechargeable NiCad data battery; AC operation during recharge
Power (AC)	Adapters for 110 V / 60 Hz or 220 V / 50 Hz
Strip Chamber	Easy open chamber design detects strip placement
Calibration	Factory Set (Controls available for verification)
Memory Capacity	4300 tests
Data Port	RS232 (via RJ11 to DB9 Serial Adapter Cable)

OPTIONS & ACCESSORIES



Available with an Integrated Strip Barcode Reader
 Records unique test strip ID to prevent test duplication or fraud.



Optional Power Adapter
 For remote field operation.



Optional Thermal Roll Printer
 For output directly to printer