

# ROSA : MRLBL/TET™ Test for Bovine Milk



## MRLBL/TET AT A GLANCE

- ▶ Specifically match E.U. Maximum Residue Limits (Table 1)
- ▶ Rapid One Step Assay (part of ROSA family of tests)
- ▶ Minimal equipment required
- ▶ Results in 8 minutes!
- ▶ Continuity from farm to table

**Table 1: SENSITIVITY LEVELS (ppb)**

BETA-LACTAMS	EU/CODEX MRL	Detection Level Range
Amoxicillin	4	3-4
Ampicillin	4	3-4
Cefalexin	100	30-60
Cefazolin	50	12-20
Cefquinome	20	15-20
Ceftiofur and Metabolite*	100	30-60
Cephapirin	60 <sup>^</sup>	6-10
Cloxacillin	30	25-35
Dicloxacillin	30	20-30
Penicillin G	4 <sup>^</sup>	2.4-3
Tetracycline Drug	EU/CODEX MRL	Detection Level Range
Chlortetracycline	100	70-100
Oxytetracycline	100	70-100
Tetracycline	100	15-30

\* Ceftiofur parent drug sensitivity is at levels approximately 1/4 those reported in the table.

<sup>^</sup> U.S. tolerance is 20 ppb cephalosporins and Australian MRL is 3 ppb penicillin G.

## OTHER AVAILABLE ROSA TESTS FOR:

- ▶ Aflatoxin M1 at 50 ppt
- ▶ Enrofloxacin
- ▶ Beta-lactams (SL & SL-6 for U.S./Canada)
- ▶ MRL Beta-lactam
- ▶ Tetracyclines
- ▶ Sulfadimethoxine/Sulfamethazine
- ▶ Sulfamethazine

## SAVE TIME AND MILK WITH A DUAL TEST

Charm MRLBL/TET was specifically designed to limit rejection of nonviolative milk by overly sensitive screening tests. Charm MRLBL/TET is the only beta-lactam / tetracycline combination test that detects most primary beta-lactams and 3 primary tetracycline drugs at or below maximum residue limits. The test is easy to use, portable and requires minimal equipment. Charm MRLBL/TET saves milk that is safe and wholesome for processing and consumption.



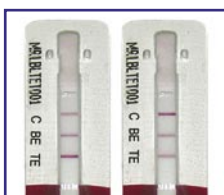
## PROCEDURE



- 1 Add milk sample to MRLBL/TET strip. Reseal strip and close incubator lid to start timer.



- 2 After 8 minutes, incubator beeps and 'test complete' light will flash. Remove MRLBL/TET Strip.



- 3 **For unofficial testing:** Visually compare Beta-lactam line (BL) and Tetracycline line (TE) to the Control line (C).  
**For official testing:** Insert valid test in ROSA Reader.

### ROSA Reader



## EQUIPMENT

### ROSA Reader

- ▶ Results in just 5 seconds
- ▶ Download to printer or computer
- ▶ Stores 4500 data points

- ▶ Records sample ID, test type, operator ID, date, time, lot number, reading and result interpretation.

### Quad Incubator



### ROSA Quad Incubator

- ▶ Self timing with indicator lights/beeper
- ▶ Count down timer display (on quad only)
- ▶ Auto Start when lid closed
- ▶ Auto Reset when lid opened
- ▶ Fits 4 test strips

### Dual Incubator



### ROSA Dual Incubator

- ▶ Self timing with indicator lights/beeper
- ▶ Auto Start when lid closed
- ▶ Auto Reset when lid opened
- ▶ Fits 2 test strips